



**unitus<sup>®</sup>**  
**seed fund**

ACTIVATING MARKETS FOR THE MASSES

# **ANNUAL IMPACT REPORT 2016**

---

**Fund impact as of December 31, 2016**



# CONTENTS

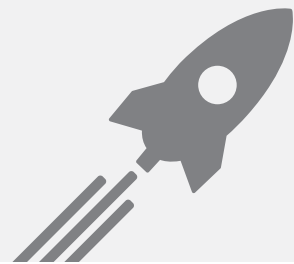
<b>What we do</b>	<b>03</b>
<b>Our Definition of Impact</b>	<b>04</b>
- Our profits and values approach	<b>04</b>
- Who we impact	<b>04</b>
<b>Impact Measurement Framework</b>	<b>05</b>
<b>Impact in Numbers</b>	<b>06</b>
- Portfolio overview	<b>06</b>
- Sector overview	<b>08</b>
<b>Companies in Focus</b>	<b>11</b>
- Milaap	<b>11</b>
- UE Lifesciences	<b>12</b>

# WHAT WE DO

We are India's leading venture fund investing in startups innovating for the masses. Our areas of focus are education, healthcare, financial technology and consumer businesses. We help startups "prepare for growth" by providing them seed funding, strategic and operating support, access to industry connections and securing growth capital.

## OUR MISSION

*To invest in early-stage businesses that activate markets for India's masses*



**Education**



**Healthcare**



**Financial  
Technology**



**Agriculture**



**Retail &  
E-commerce**



**Mobile  
& Consumer**



# OUR DEFINITION OF IMPACT

01

**Social impact** – Investees have the potential to impact at least 100,000 BoP families, and/or directly employ up to 1,000 BoP individuals across India in 5 years, resulting in improved livelihoods (new and better jobs) through the formal economy.

02

**Financial impact on the companies we invest in** – Investees are on a path to financial sustainability through increased revenues and additional capital, enabling them to continue scaling.

03

**Catalytic impact on the entrepreneurial ecosystem** - Engagement with local and global network of advisors, skilled service providers and strategic partnerships such that every investee benefits from, influences, and accelerates the functioning of the overall entrepreneurial ecosystem.

## OUR PROFITS AND VALUES APPROACH

We believe positive, sustainable change comes from delivering profits while embracing and living by values. We maximize the social impact of the seed investments we make by:

- ▶ **Company Selection** - We invest only in for-profit companies that are able to serve large base of the economic pyramid (“BoP”) populations, providing products and services that improve their lives.
- ▶ **Impact Metrics** - Working with the founders of every portfolio company, we develop a small number of measurable impact goals that are aligned with their business operations and monitored at least twice a year.

## WHO WE IMPACT

### Base of the Economic Pyramid (BoP)

BoP comprises the 1.05 billion people in India (5 out of 6 Indians) who live on an annual household income of less than INR 200,000 or INR 16,667 (~USD \$250) per month, as of 2005. See [usf.vc/bop](http://usf.vc/bop).

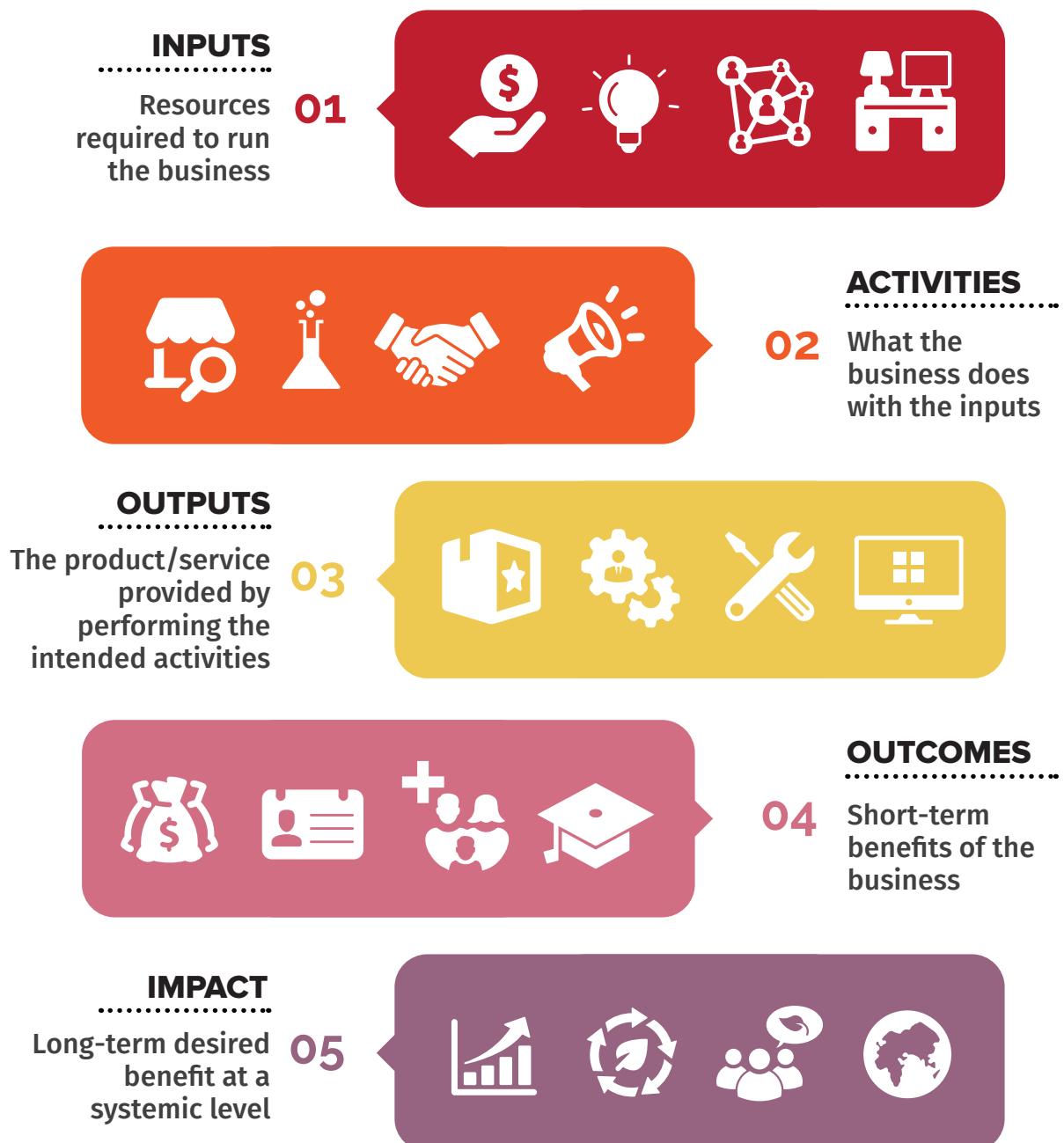
In urban India, where the cost of living is higher, we consider BoP to have a monthly household incomes of less than INR 25,000 (~USD \$375). In rural India, the figure stands at INR 13,000 (~USD \$195).



# OUR IMPACT MEASUREMENT FRAMEWORK

Our evaluation framework is adapted from the "Logic Model"- a tool that helps conceptualize a company's change effort by breaking the broader vision statement in to a series of actionable items and intended results at different frequencies.

As our investees are early-stage and continue to grow, the framework is designed to be lean (minimal metrics) and adaptive (metrics defined by investee's stage - very early, seed and growth).

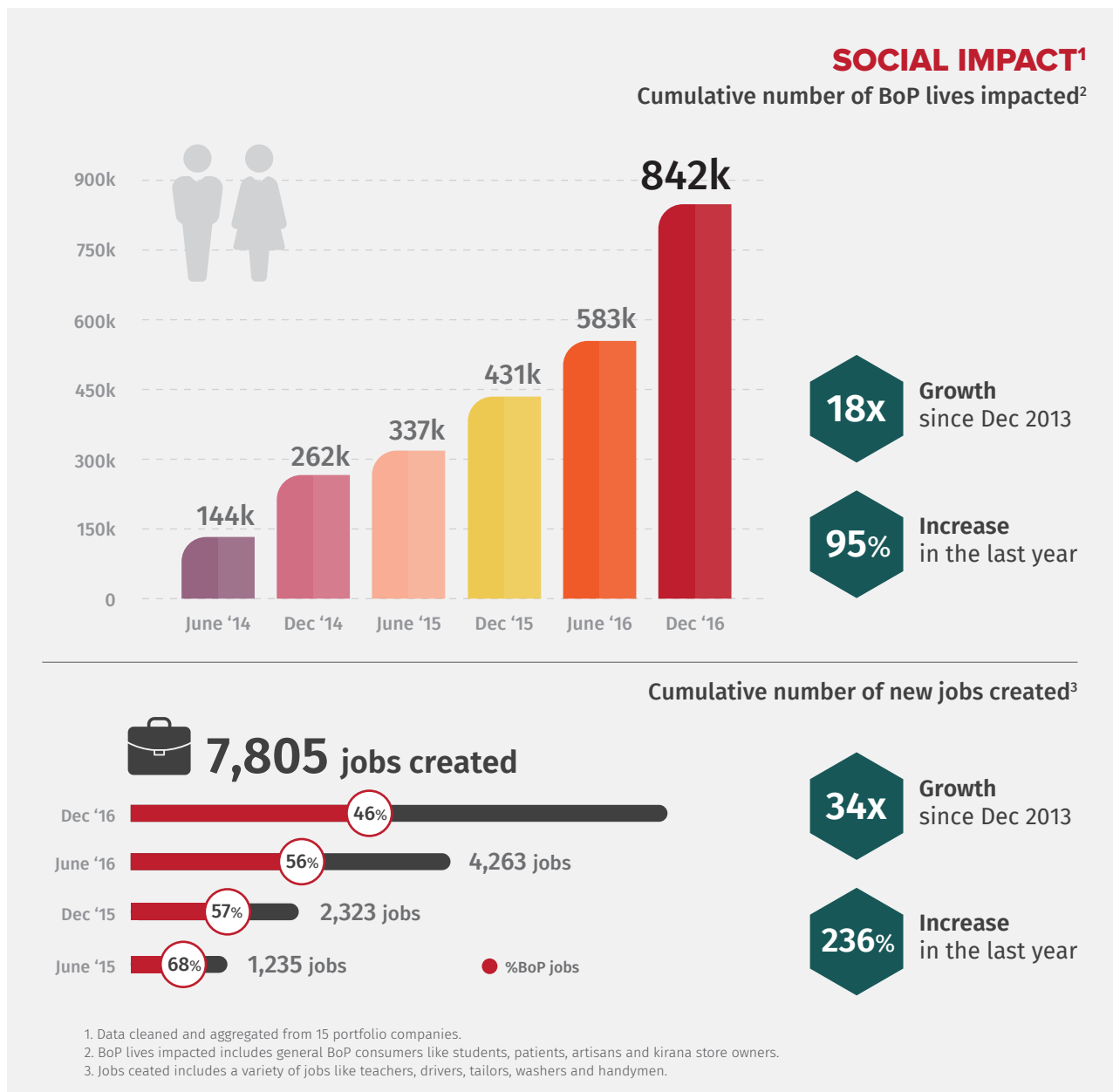


# IMPACT IN NUMBERS

In addition to delivering strong financial returns to investors, we are committed to measuring and reporting the impact of our investments. We currently track 7 measurements at the aggregate level:

- Social impact** – BoP lives impacted, jobs created (%BoP), states touched
- Financial impact** – Revenue generated, additional capital raised as a multiple of seed fund investment
- Ecosystem impact** – Advisors and ecosystem partners

## PORTFOLIO IMPACT OVERVIEW

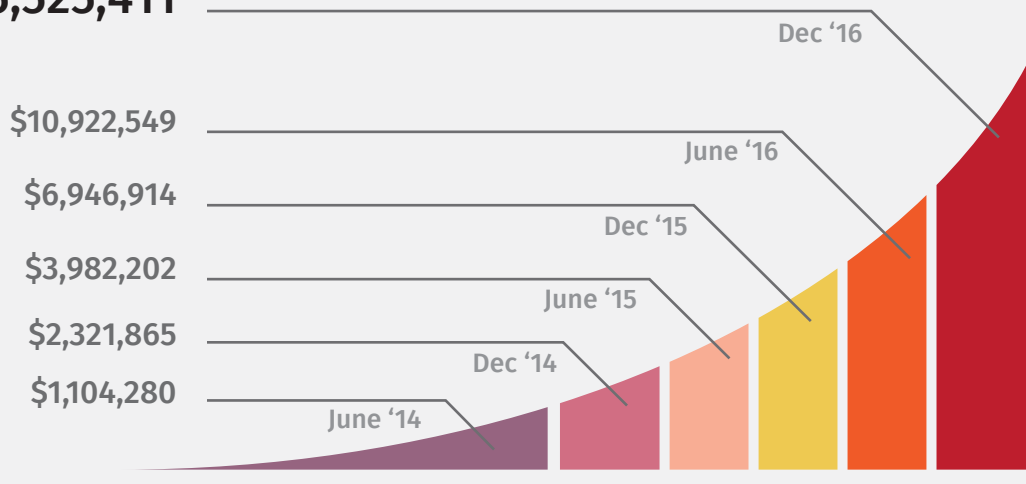




## FINCANCIAL & ECOSYSTEM IMPACT

Cumulative revenues generated

**\$15,525,411**



Since Dec 2013

**41X**

Revenue Growth

**4.6X**

Additional Capital raised

Since Dec 2015

**123%**

Revenue Growth

**87%**

Growth in Additional capital raised



Our portfolio companies impact all **29 states**



**74** Advisors on-board<sup>1</sup>



**26+** Strategic Partners<sup>2</sup>



**14 active** Portfolio companies<sup>3</sup>

1. Advisors include board members, venture advisors and voluntary members.

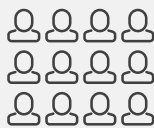
2. Strategic partners include non-financial relationships that help scale. e.g., trade associations, governmental agencies, etc.

3. 14 companies active of 23 invested in; 9 have been exited or written off.

## SECTOR IMPACT OVERVIEW

### Education

5 PORTFOLIO COMPANIES



**39,664**

BoP lives impacted

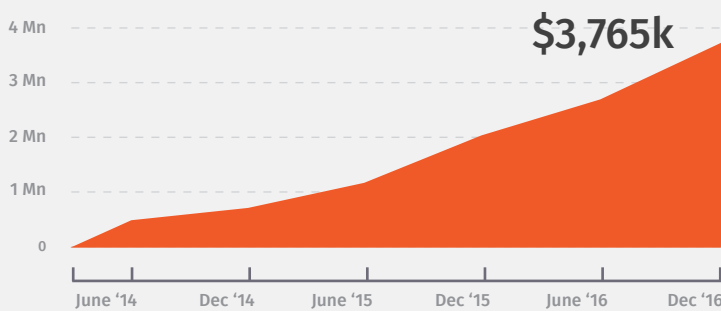
**4,397**

jobs created

**17%**

BoP jobs

Cumulative revenues generated



**83%**

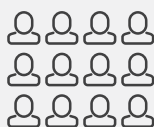
Revenue Growth since Dec 2015

**8.4x**

Additional Capital raised

### Healthcare

4 PORTFOLIO COMPANIES



**175,298**

BoP lives impacted

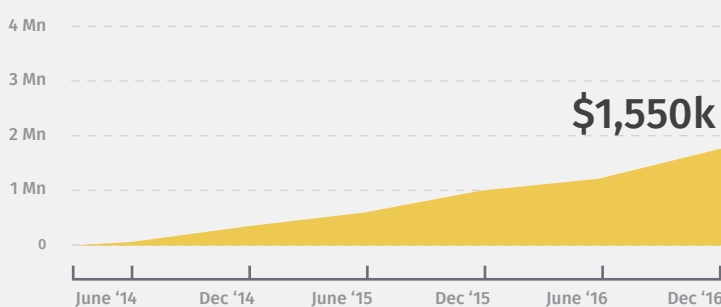
**172**

jobs created

**26%**

BoP jobs

Cumulative revenues generated



**49%**

Revenue Growth since Dec 2015

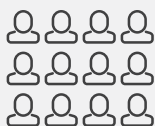
**2.2x**

Additional Capital raised



## Retail & E-commerce

2 PORTFOLIO COMPANIES



**85,940**

BoP lives impacted

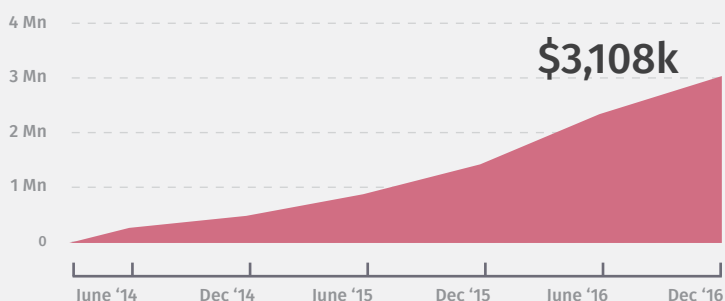
**152**

jobs created

**18%**

BoP jobs

### Cumulative revenues generated



**134%**

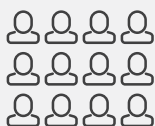
Revenue Growth since Dec 2015

**6.7x**

Additional Capital raised

## Mobile & Consumer

3 PORTFOLIO COMPANIES



**194,082**

BoP lives impacted

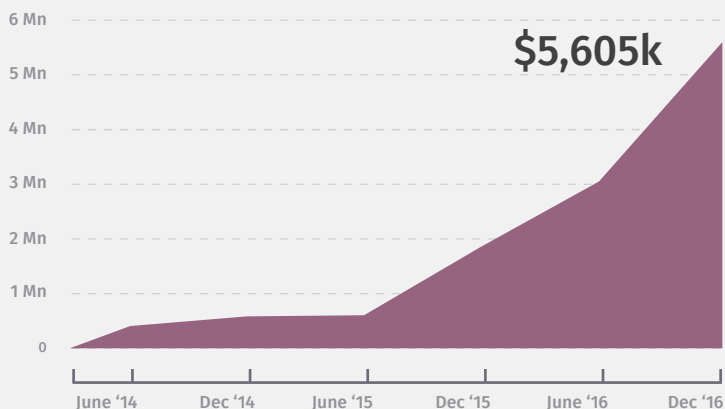
**3,025**

jobs created

**92%**

BoP jobs

### Cumulative revenues generated



**421%**

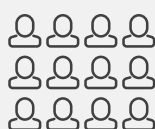
Revenue Growth since Dec 2015

**1.5x**

Additional Capital raised

## Financial Technology

1 PORTFOLIO COMPANY



**345,358**

BoP lives impacted

**49**

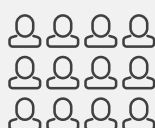
jobs created

**2%**

BoP jobs

## Agriculture

1 PORTFOLIO COMPANY



**2,000**

BoP lives impacted

**10**

jobs created

## IMPACT AT A GLANCE

	Education	Healthcare	Retail & E-commerce	Mobile & Consumer	Financial Technology	Agriculture
Portfolio companies	5	4	2	3	1	1
BoP lives touched	39,664	175,298	85,940	194,082	345,358	2,000
Total jobs created	4,397	172	152	3,025	49	10
% BoP jobs	17%	26%	18%	92%	2%	-
Revenue generated	\$ 3,764k	\$ 1,550k	\$ 3,107k	\$ 5,604k	-	-
Additional capital raised	8.46	2.24	6.71	1.54	-	-

\* Agriculture and Financial Technology sectors' revenue has not been represented since there is only one company in each.

## IN FOCUS: MILAAP

### INDIA'S LARGEST ONLINE PLATFORM FOR PERSONAL AND SOCIAL FUNDRAISING

Milaap is India's largest impact-focused crowdfunding and micro-lending platform. It is a pioneer and trusted brand for individuals and organizations crowdfunding for education, healthcare, water and sanitation, emergencies, and other community needs, thereby filling the credit gap for essential services.



#### NUMBER OF BoP INDIVIDUALS IMPACTED BY SECTOR AS OF DECEMBER 2016

**78,609**  
in Enterprise

**65,268**  
in Energy

**13,680**  
in Sanitation

**7,291**  
in Education

**5,323**  
in Vocational Training

**5,462**  
in Water

## IN FOCUS: UE LIFESCIENCES

### AFFORDABLE BREAST CANCER SCREENING SERVICES TO ENABLE EARLY DETECTION FOR ALL

UE LifeSciences has developed India's first portable easy-to-use cloud-enabled radiation-free Breast Cancer (BC) scanning device that can be operated effectively by health workers in low-resource settings. In India, less than 1% of women undergo screening, due to lack of access to timely and affordable screening devices. Through the iBreastExam (iBE) device, UE LifeSciences is addressing an unmet USD \$2 bn annual screening gap in India.



UE LifeSciences



**15**

Partners using  
screening equipment

**27,700**

Scans Performed

**2,100**

iBE findings\*

**42**

Employees

**69%**

BoP Employees

\*Number of cases identified that  
require further review